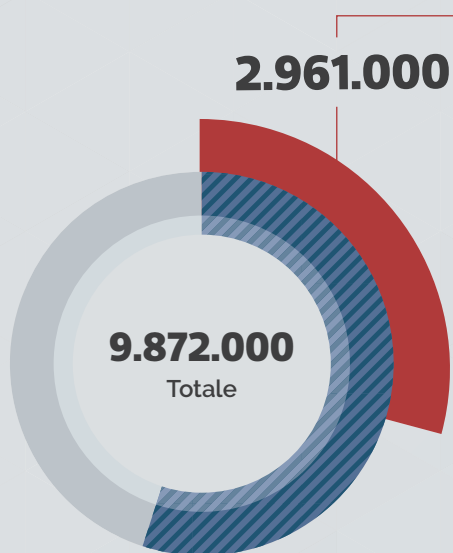
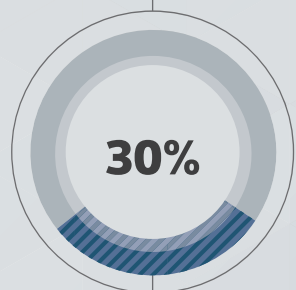


MAMME E LAVORO AL TEMPO DEL COVID

Donne lavoratrici



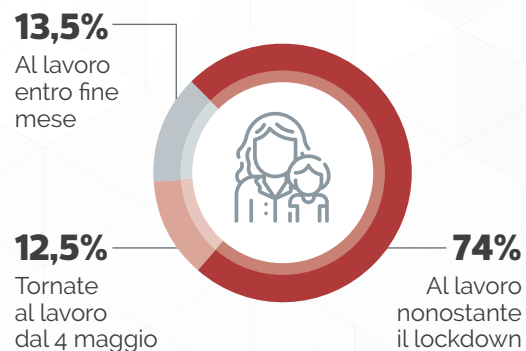
5.400.000
Mamme



Mamme occupate con almeno un figlio minore di 15 anni

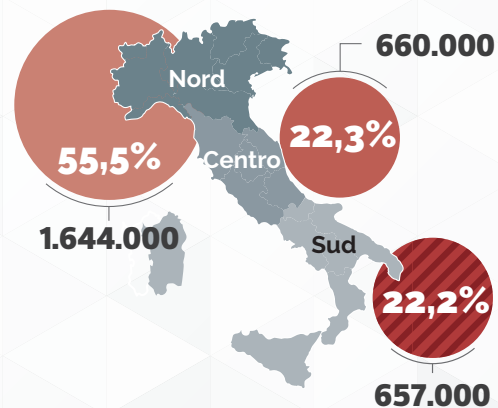
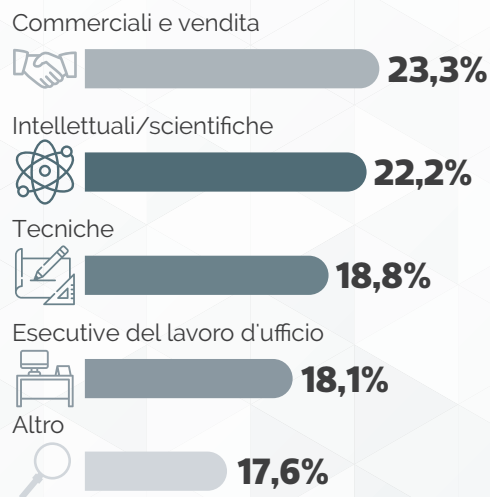
Mamme occupate con almeno un figlio minore di 15 anni

30% del totale delle donne lavoratrici



Professioni

82,8% sono dipendenti



Settori

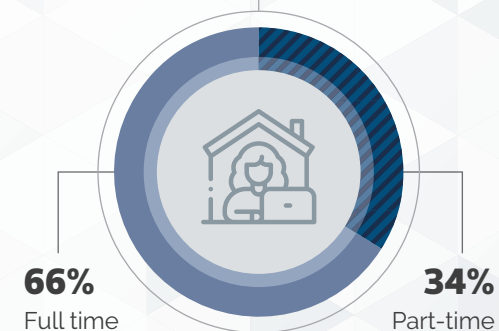
83% occupate nei servizi



Smart working

Possibilità di lavoro agile

51,1%



Reddito netto mensile

■ NO smart working ■ SI smart working

